

SSTR1 Antibody (C-term)
Affinity Purified Rabbit Polyclonal Antibody (Pab)
Catalog # AP14037b**Specification**

SSTR1 Antibody (C-term) - Product Information

Application	WB,E
Primary Accession	P30872
Other Accession	P28646 , P30873 , NP_001040.1
Reactivity	Mouse
Predicted	Rat
Host	Rabbit
Clonality	Polyclonal
Isotype	Rabbit IgG
Calculated MW	42686
Antigen Region	351-380

SSTR1 Antibody (C-term) - Additional Information**Gene ID** 6751**Other Names**

Somatostatin receptor type 1, SS-1-R, SS1-R, SS1R, SRIF-2, SSTR1

Target/Specificity

This SSTR1 antibody is generated from rabbits immunized with a KLH conjugated synthetic peptide between 351-380 amino acids from the C-terminal region of human SSTR1.

Dilution

WB~~1:1000

E~~Use at an assay dependent concentration.

Format

Purified polyclonal antibody supplied in PBS with 0.09% (W/V) sodium azide. This antibody is purified through a protein A column, followed by peptide affinity purification.

Storage

Maintain refrigerated at 2-8°C for up to 2 weeks. For long term storage store at -20°C in small aliquots to prevent freeze-thaw cycles.

Precautions

SSTR1 Antibody (C-term) is for research use only and not for use in diagnostic or therapeutic procedures.

SSTR1 Antibody (C-term) - Protein Information**Name** SSTR1

Function Receptor for somatostatin with higher affinity for somatostatin-14 than -28. This receptor is coupled via pertussis toxin sensitive G proteins to inhibition of adenylyl cyclase. In addition it stimulates phosphotyrosine phosphatase and Na(+)/H(+) exchanger via pertussis toxin insensitive G proteins.

Cellular Location

Cell membrane; Multi-pass membrane protein.

Tissue Location

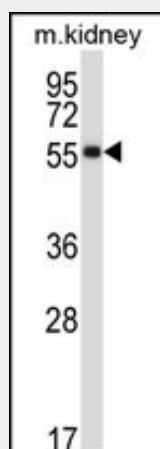
Fetal kidney, fetal liver, and adult pancreas, brain, lung, jejunum and stomach

SSTR1 Antibody (C-term) - Protocols

Provided below are standard protocols that you may find useful for product applications.

- [Western Blot](#)
- [Blocking Peptides](#)
- [Dot Blot](#)
- [Immunohistochemistry](#)
- [Immunofluorescence](#)
- [Immunoprecipitation](#)
- [Flow Cytometry](#)
- [Cell Culture](#)

SSTR1 Antibody (C-term) - Images



SSTR1 Antibody (C-term) (Cat. #AP14037b) western blot analysis in mouse kidney tissue lysates (35ug/lane). This demonstrates the SSTR1 antibody detected the SSTR1 protein (arrow).

SSTR1 Antibody (C-term) - Background

Somatostatin acts at many sites to inhibit the release of many hormones and other secretory proteins. The biological effects of somatostatin are probably mediated by a family of G protein-coupled receptors that are expressed in a tissue-specific manner. The encoded protein is a member of the superfamily of somatostatin receptors having seven transmembrane segments, and is expressed in highest levels in jejunum and stomach. [provided by RefSeq].

SSTR1 Antibody (C-term) - References

- Canzian, F., et al. Hum. Mol. Genet. 19(19):3873-3884(2010)
Liu, C.Y., et al. Carcinogenesis 31(7):1259-1263(2010)
Pisarek, H., et al. Folia Histochem. Cytobiol. 48(1):142-147(2010)
Johansson, M., et al. Cancer Epidemiol. Biomarkers Prev. 18(5):1644-1650(2009)
Casarini, A.P., et al. Pituitary 12(4):297-303(2009)